



THE WEALD NEWSLETTER

13th March 2026 Issue 3

Headteacher: James Baguley



Dear Parents and Carers,

I hope this newsletter finds you all well. I can't believe how quickly this term is going. As always it has been a very busy few weeks.

Thank you to the parents who attended the recent spelling workshop led by Mrs Read. I hope you found it insightful. All schools tend to find the teaching of spelling challenging given the ever growing needs of pupils. Our new approach is very much precision-based and engaging for the children. A big thank you to Mrs Read for driving this forward at The Weald.

As a school, we have also raised the profile of sport this year. Miss Price has really driven PE and competitive sports forward this year. We have most recently participated in the Dorking wide hockey and rugby tournaments. It should be stressed that we are particularly playing against schools who often have a full time sports coach and/or are much larger than The Weald. In the hockey tournament we came second after losing in the final 1-0. All the pupils made me very proud and demonstrated the huge improvements we have made in recent times under the guidance of Miss Price. It was also wonderful as part of ensuring 'inclusivity' to sit in and watch the Deaf Awareness assembly led by Mrs Hopkins. It was very inspiring and developed a great awareness of the challenges that many of our children face on a daily basis.

What a wonderful 'World Book Day' we had once again this year. Thank you to all the parents and carers who helped design and made some amazing book character hats. I know it was very difficult for Mrs Read to judge the winners.

I would personally like to thank Circular Dorking who donated a range of books for our 'World Book Day' winners. This was a combined project funded between Circular Dorking and Heaths Educational Books (Sutton). Thank you to everyone involved.

And Finally it is great to welcome back Chrissie to The Weald. Chrissie and her PAT dog, Monty listen to children read every Friday. It is great to have them back on board. Wishing you all a restful weekend.

Best wishes
Mr J Baguley
Head teacher



Safeguarding: Change of Collection Arrangements

Please could we remind you to call/email the office if your child is being collected by anyone other than the parent/carer otherwise the child

will not be released. Also please inform the office if your child is not on the bus and who is collecting them. This is a safeguarding issue and we need your permission before we can hand over your child to another person. Thank you for your cooperation.

Parking Please be reminded that only people with a **blue disabled badge** can park on the school grounds at pick up and collection times. We are very limited on space in the front car park and this can be dangerous if too many cars are manoeuvring. If you do not have this badge, please park on the Newdigate Road or in Beare Green Village.

Attendance

Well done to Mandela for having the best attendance this week. You were the winners of the attendance cup which is given out every Friday in the achievement assembly.

Please can we also remind parents to call or email the office BEFORE 9:00am on each day their child is absent from school.

ATTENDANCE **EVERY SCHOOL DAY COUNTS!**
WHY IS IT IMPORTANT?

Children are required by law to attend 190 school days per year. The Government states that every pupil's attendance should be at least 95%.

HOW DO YOU MEASURE UP?

Attendance	Days Absent	Weeks Absent	Lessons Missed
95%	9 Days	2 Weeks	50 Lessons
90%	19 Days	4 Weeks	100 Lessons
85%	29 Days	6 Weeks	150 Lessons
80%	38 Days	8 Weeks	200 Lessons
75%	48 Days	10 Weeks	250 Lessons
70%	57 Days	11.5 Weeks	290 Lessons
65%	67 Days	13.5 Weeks	340 Lessons

89% and below
Drastic effect on academic achievement

95% - 90%
Cause for concern

100% - 96%
Excellent



We are Musicians Composer this Half Term

This half term we are moving onto learning about another inspirational composer. Having learnt about



Fanny Mendelssohn's struggles to prove her worth as a female composer, we move back to the 18th century to learn about Joseph Bologne who was born on the French Caribbean island of Guadeloupe and

was the son of an enslaved woman and a French plantation owner. We shall listen to his music and consider the challenges he faced as well as why perhaps he is not well known today.



TAKEHOME

23rd February - 1st March



In the news this week

Scientists at NASA are preparing to send astronauts back to the Moon, as part of a new space programme running over the coming years. The series of missions aims to test new technology, learn more about the Moon, and help humans prepare for future journeys deeper into space. The next mission is Artemis II. The plans have sparked discussions about why people explore space and how they could help life on Earth.

Things to talk about at home ...

- > What do you already know about space or the Moon? What would you like to find out?
- > Why do you believe people choose to explore space, even though it can be difficult and risky?
- > If you could explore anywhere beyond Earth, where would you go and why?

We are immensely proud of our year 5/6 hockey players who, in their first ever tournament, came an incredible second against very stiff competition. We were amazed at their resilience, determination and team spirit.



Celebration Assembly - Friday 27th February



Well done to Evie, Tommy, Alex, Patrick, Freddie, Cassie, Solomon, Ava, Layna, Spencer, Milo, Charlie and Yoda for receiving their Golden Ticket. We are very proud of your achievements.

Deaf Awareness Assembly



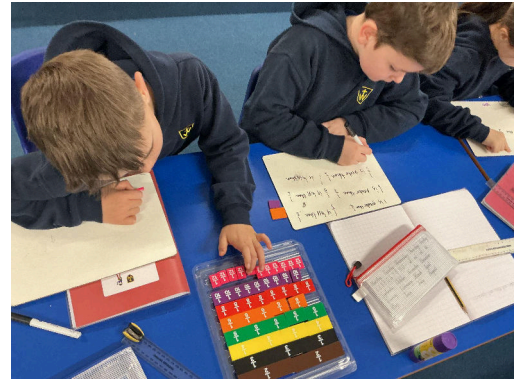
Following on from our assembly about Eddie, Jasmine's brother, who has CHARGE syndrome and is deaf and blind, we all enjoyed and learnt so much from our visitor, Charlotte, from the Deaf Awareness Charity, CSSEF (Chloe's & Sophie's Special Ears Fund). We learnt

about the reasons why people might be deaf, the different ways in which people are helped to hear, how deaf people communicate and all about well-known celebrities who are deaf.

I wonder if you know what a BAHA is? What number of children are deaf in the UK? How many people in total are deaf in the UK? (Answers: Bone Anchored Hearing Aid, 54,000 and 11 million).



We are Mathematicians



Year 3 and 4 have been busy mathematicians this last week! We started our fractions journey, learning what a fraction is and discovering the numerator and denominator.



We are Geographers The Weald Forest School

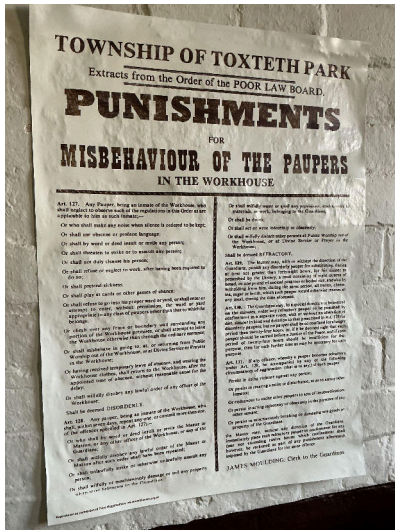


As signs of spring are finally upon us, it has been wonderful to see the children enjoying our amazing Forest School - this week they found an abundance of frogspawn which had not been there just days earlier! To see the children thriving in our wonderful grounds, with

the sun on their faces, was a real delight! Check out our school Facebook for more photos of this incredible environment!



We are Historians - 5/6 Spike Visit



using a pickaxe or unravelling the individual pieces of twine in a ship's rope. It was fascinating to see the cells in the old building where they would have slept and to read about their stories.

By Joseph and Tommy

Year 6 Junior Citizen Event



On the 27th of February Year 5 and 6 went on a trip to The Spike in Guildford, linked to our enquiry - How can science help the vulnerable? The Spike was built in 1906 as a workhouse for the homeless (who were known as 'Vagrants'). The New Poor Laws and the Vagrancy Act of 1824

would see you punished if caught 'sleeping rough'. The homeless would be given a bed to sleep in as well as a meal and a bath. To do this, they would either pay 1 penny or carry out a day's manual labour. This consisted of back breaking or incredibly tedious work, such as breaking large rocks



Year 6 participated in the Junior Citizen event this week, developing key knowledge to support their move to secondary school and the greater independence it brings. Their learning covered practical

safety topics such as railway and open water safety, criminal responsibility, first response first aid, and guidance on drug awareness and resisting peer pressure.



World Book Day - Class Photos

Shackleton



Curie



Mandela



Malala



Attenborough



Turing



Please see Facebook for more photos!

Celebration Assembly - Friday 6th March



Well done to Matilda, Brea, Angelina, Bailey, Flo, Poppy, Vinnie, Jasmine, Annabelle, Finn and Jack for receiving their Golden Ticket. We are very proud of your achievements.



Congratulations, girls. You played with immense courage. We couldn't ask for better role models or representatives of our school.

We are Athletes



What an absolutely outstanding performance from our year 5/6 girls today! Taking 3rd place in a tough tournament is impressive on its own, but it was the sports ethic and unshakeable team bond that made us truly proud.

They battled through six hard-fought games, and incredibly, lost only one. We scored a whopping 23 tries in total. This is a testament to their commitment, resilience, and sheer determination. Against strong competition, they lifted each other up every step of the way, showing what real teamwork looks like both on and off the pitch.



Dates for your Diary

Spring/Summer Term 2026

17th and 19th March - Parents Evening

19th March - 5/6 Boys Tag Rugby

24th March: Athlete Visit

26th March: Easter Pause Day

27th March - FoTW Easter Egg Hunt

27th March - End of Term - 1.15pm

13th April - INSET Day

20th April - 3 / 4 Girls Tag Rugby

23rd April - Year 5 Sky Studios

27-29th April - Year 4 Bikeability

11-14th May - Year 6 SATS

19th May - 5 / 6 Boys Kwik Cricket

21st May - Class photos

25th-29th May - Half term

1st June - Back to School

After School Clubs Timetable - Spring Term 2026

Monday:

Running (Kai) - 3.20-4.30pm

Dance - 3.20pm-4.20pm

Tuesday:

Art - 3.20pm-4.30pm - 5.30pm

Cookery Club - 3.20pm - 4.35pm

Dodgeball (Kai) - 3.20-4.30pm

Wednesday:

Art - 3.20pm - 4.30pm - 5.30pm

Forest School - 3.20-4.30pm

Karate - 3.20pm - 4.20pm

Multisports - 3.20pm-4.30pm

Thursday:

Art - 3.20pm - 4.30pm - 5.30pm

Roller Hockey Club - 3.20-4.20pm

Cricket (Kai) - 3.20pm - 4.30pm

Friday:

Bowls - 3.20pm - 4.20pm

Football (Kai) - 3.20-4.30pm

Lunchtime Clubs Timetable

Monday:

Dodgeball - 12.30-1pm - outside

Gym - 12.30-1pm - Main Hall

Tuesday:

Rock Band - 12.30 - 1pm - Music Room

Wednesday:

Multisports - 12.30-1pm - outside

Thursday:

Multisports - 12.30-1pm - outside

Sing Club - 12.30-1pm - Main hall - please contact Kazia

Gibb directly gibbkazia@gmail.com

Friday:

Multisports - 12.30-1pm



We have a textile recycling bank!



Raising Money Is In Our Jeans!!

Help the school raise money by donating all your old clothes, shoes, soft toys, and bed linen. Put the clothes in the bank and Astra Recycling will put money in the school's bank!

The bin is hungry, here's what it likes and doesn't like!

YES!
Clothes
Pairs of shoes
Sheets
Duvet Covers
Pillow Cases
Accessories
Soft Toys

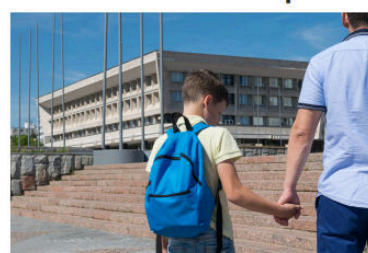
NO!
Pillows
Quilts
Lined Curtains
Board Games
General Waste/ Rubbish
Toys/Plastics



Online FREE talk by Jane Keyworth

Anxiety Based School Avoidance

March 26th 7-8pm



Book online

www.facefamilyadvice.co.uk

go to PARENTS - Live Talks page

All 16 parent talks **FREE** with our School Membership



Dorking Lawn Tennis & Squash Club

EASTER TENNIS CAMPS

MON 30TH MARCH - THURS 2ND APRIL 2026
TUES 7TH APRIL - FRI 10TH APRIL 2026

KIDS (AGES 4 - 11)
MONDAY - FRIDAY
9.30AM - 12PM

TEENS (AGES 12 - 16)
WEDNESDAYS
2PM - 4PM

FUN AND FRIENDLY ENVIRONMENT

CHOOSE ANY DAYS

TO BOOK
CONTACT HEAD COACH BRIAN
DORKINGTENNIS@GMAIL.COM
QUOTING: PLAYER NAME, AGE,
CONTACT DETAILS, MEDICAL INFO
07712 557076

PRICES (PER SESSION):
MEMBERS £20
NON-MEMBERS £23

PAYABLE TO: BRIAN LOVE
SORT CODE: 09-01-28
ACCOUNT NO: 74084211





EarlyBird Plus Program

Join the National Autistic Society's EarlyBird Plus program for parents and carers of autistic children aged 6 to 10 years.



The six-session program covers:

- understanding autism
- communication
- understanding autistic experiences
- supporting daily living
- health and wellbeing
- connections.

"This has made a real difference to me. In general, life-changing."
Parent



The EarlyBird Plus programme aims to empower parents and supporting professionals to understand more about autism and discuss useful strategies on how to support autistic children.

For more information contact:

Name: Surrey Family Support Services
Contact: Surrey.FamilySupport@nas.org.uk

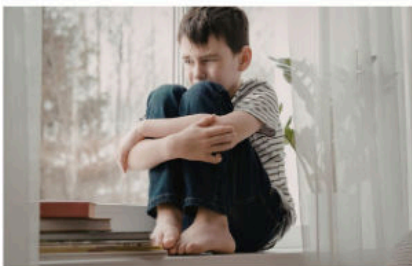


FREE online talk by
Jane Keyworth

FACE family Advice Lead Facilitator

Decreasing Depression

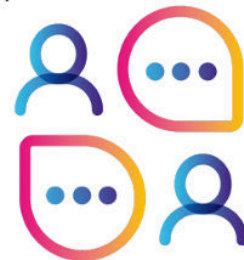
23rd April 7-8pm



Book online

www.facefamilyadvice.co.uk

Parents - Live Talks page



Stepping Up for Autism

A FREE course for parents and carers

An 8 session course over 2hrs a week for 8 weeks, for parents and carers of children who live in Surrey, with or without an Autism diagnosis. Our course provides practical advice, information and strategies to help you understand your child and support their needs.

To register for a place please email:

@ Surrey.FamilySupport@nas.org.uk